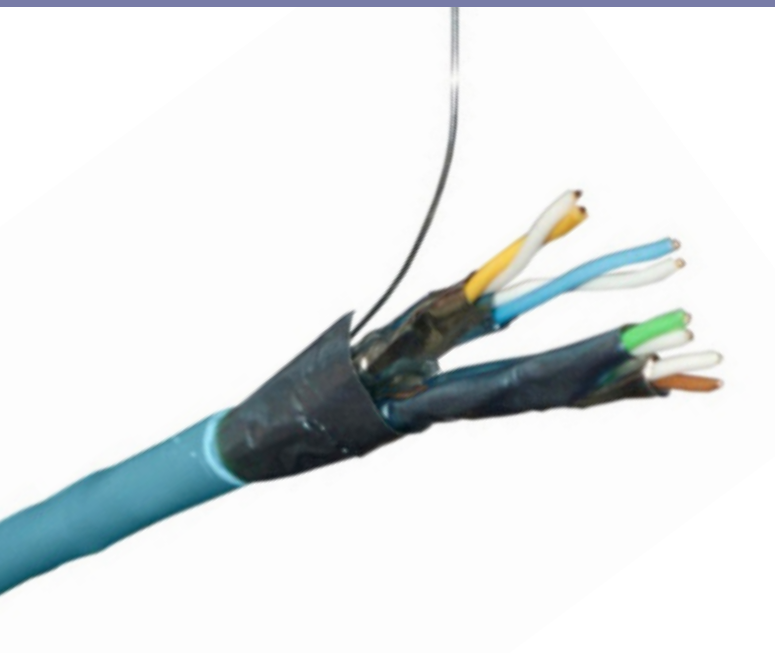


## Excel Category 6a Screened Twisted Pair (F/FTP) S-Foil Cable – LSOH



25 Year System Warranty

---

Lightweight, Compact Design

---

Category 6a Compliant

---

### Features

- 25 Year System Warranty
- Category 6a Compliant
- Suitable for 10GBASE-T, 10 Gigabit Ethernet Applications
- Supports Power Over Ethernet (POE) Plus
- Lightweight, Compact Design
- Specified to 500MHz
- “S” foil screen
- Low Smoke Zero Halogen Outer Sheath
- No.2 cabling system by market share, as reported by BSRIA

# Product Overview

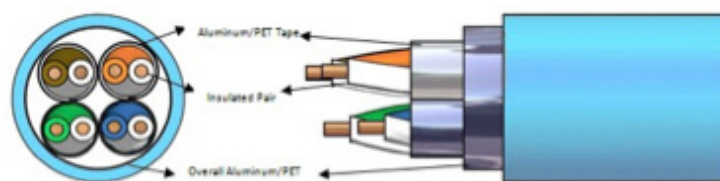
Excel Category 6A – Augmented Category 6 – cables, and associated connectors, take the performance capabilities of copper infrastructure to new levels. The cable has been designed to exceed the ISO/IEC, TIA and CENELEC for Category 6A/Augmented Category 6 component requirements. This delivers Class EA/ Augmented Category 6 link performance over distances of up to 90 metres which supports the applications including 10GBASE-T, 10 Gigabit Ethernet.

Each cable consists of two sets of two pairs wrapped together in an “S” configuration with high quality, strong, aluminium/polyester foil tape providing screening for each pair. The “S” Foil configuration ensures separation of the pairs that ensures the performance. These are then wrapped in another, overall foil. By using two sets of two pairs has resulted in a reduced diameter and weight cable. The smaller cable diameter has reduced the cable cross-sectional area by 19.7%. This design change has been instigated to benefit the installer and end user in many direct and indirect ways. Reducing the size and weight means the cable occupies less space in the containment which in turn improves airflow in under floor installations. Less weight means that the containment can be of lighter construction. It also means that handling the cable on site is easier. Smaller diameter cable means that there is waste packaging to dispose of. The individual pairs are set to different lay lengths to ensure optimum performance.

Excel Category 6A cables are jacketed in an Ice Blue low smoke zero halogen (LSOH) compound compliant with flame retardant standards as defined in IEC 60332-1, and smoke emission standards IEC61034. Supplied on 500 metre plywood drums, each cable has a print legend identifying the specification, part code and sequential metre marking which counts down from 500 metres to 1 metre, on each drum to reduce waste.

## Typical Applications

- 1000BASE-T Gigabit Ethernet
- 10GBASE-T 10 Gigabit Ethernet
- 1.2/2.4Gbps ATM
- Digital and analogue video
- IEEE 802.3af Power over Ethernet (PoE)
- IEEE 802.3at Power over Ethernet Plus (PoE+)



## Performance Overview

Excel Category 6 cables are manufactured and tested to the Category 6 performance standards defined by the TIA, ISO and EN standards bodies. A range of performance characteristics are tested up to 250MHz including return loss, attenuation and near and far end crosstalk (NEXT and FEXT) for which both worst case and power sum tests are completed. Actual performance far exceeds the required standard – when tested in isolation and in circuit – resulting in significant headroom for even the most demanding of applications.

As well as providing link and channel compliance with the aforementioned specification – when installed with Excel category 6 components – the cable is also backward compatible with Category 5 and 5e components.

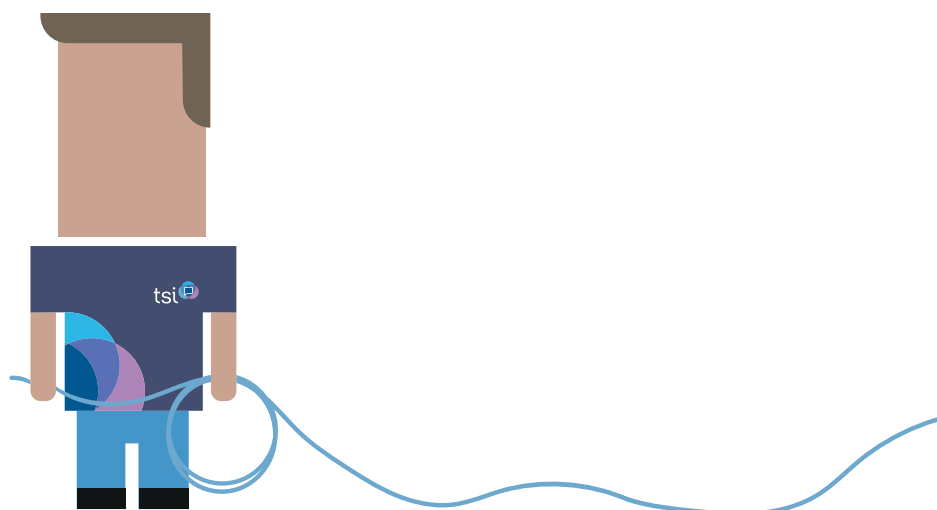
## Performance / Specification Table

Frequency (MHZ)	Ins. Loss (dB/100m) Max.	Return Loss (dB) Min.	NEXT (dB/100m) Min.	ACR-F (dB/100m) Min.	PS NEXT (dB/100m) Min.	PS ACR-F (dB/100m) Min.	Delay Skew (ns/100m) Max.	Prop. Delay (ns/100m) Max.
1	-	20.0	-	-	-	-	-	-
4	3.8	23.0	66.3	56.0	63.3	53.0	45	552.0
10	5.9	25.0	60.3	48.0	57.3	45.0	45	545.4
16	7.5	25.0	57.2	43.9	54.2	40.9	45	543.0
20	8.4	25.0	55.8	42.0	52.8	39.0	45	542.0
31.25	10.5	24.3	52.9	38.1	49.9	35.1	45	540.4
62.5	15	23.6	48.4	32.1	45.4	29.1	45	538.6
100	19.1	21.5	45.3	28.0	42.3	25.0	45	537.6
200	27.6	18.0	40.8	22.2	37.8	19.0	45	536.5
250	31.1	17.3	39.3	20.0	36.6	17.0	45	536.3
300	34.3	17.3	38.1	18.5	35.1	15.5	45	536.1
400	40.1	17.3	36.3	16.0	33.3	13.0	45	535.8
500	45.3	17.3	34.8	14.0	31.8	11.0	45	535.6

Nominal velocity of propagation (NVP 76%)

Note 1: All tests include 401 points swept frequency measurements.

Note 2: All electrical characteristics are given at 20°C



## Part Number Information

Part Number	Description
100-196	Category 6 AF/FTP "S" Foil Cable LSOH, 500m, Ice Blue

## System Warranty

The Excel System Warranty provides a 25-year product and applications assurance of compliance with the industry performance standard appropriate to the class of cabling installed. The warranty may be applied for by an accredited Excel Partner who has designed, supplied and installed the said system.

